

# ELITE ENCOUNTERS

VIDEO UPDATE 22<sup>ND</sup> JUNE 2015

# CONTENTS

- What Did I Get Done This Week?

WHAT DID I GET DONE THIS WEEK?

WHAT DID I GET DONE THIS WEEK?

NAFF ALL

WHAT DID I GET DONE THIS WEEK?

ZILCH

WHAT DID I GET DONE THIS WEEK?

NADA

WHAT DID I GET DONE THIS WEEK?

BUPKIS

WHAT DID I GET DONE THIS WEEK?

Июл



WHAT DID I GET DONE THIS WEEK?

BIG FAT NOTHIN'

WHY NOTHIN'...I MEAN NOTHING?

WHY NOTHIN'...I MEAN NOTHING?

REAL F\*\*\*\*\*G LIFE  
KICKED ME INNA  
UNMENTIONABLES

# WHY NOTHIN'...I MEAN NOTHING?

- Monday: the update/stream was interrupted by my gaming PC losing all of the twitch stream settings
- Tuesday: went shopping with Mrs Selezen after work, then planning for our son's birthday.
- Wednesday: My son's birthday
- Thursday...

# WHY NOTHIN'...I MEAN NOTHING?



Your PC ran into a problem and needs to restart. We're just collecting some error info, and then we'll restart for you. (0% complete)

If you'd like to know more, you can search online later for this error: HAL\_INITIALIZATION\_FAILED

# WHY NOTHIN'...I MEAN NOTHING?

- Windows 10 not stable enough
- Reinstall Windows 8!
- Reinstalled it at 1am Thursday.
- Went to bed.
- Came back from work Fri night.
- Booted to continue installation.
- Got into Windows, connected to WiFi then...

# WHY NOTHIN'...I MEAN NOTHING?

Thermal shutdown occurred

The System BIOS has detected that your notebook PC was put into thermal shutdown to avoid overheating. The system is now operating normally.

Overheating may occur if the cooling vents are blocked or the operating temperature exceeds the specifications. The notebook PC should resume operation once the situation is resolved.

System Temperature (90C)

ENTER - Continue Startup

For more information, please visit: [www.hp.com/go/techcenter/stop](http://www.hp.com/go/techcenter/stop)

# WHY NUTHIN'...I MEAN NOTHING?

- Left it off for about half an hour.
- Rebooted



# WHY NUTHIN' ...I MEAN NOTHING?

- Left it off for about half an hour.
- Rebooted
- Crashed.
- Put fans on all over office. Rebooted.
- Crashed.
- Prayed to machine gods. Rebooted
- Crashed

# WHY NUTHIN'...I MEAN NOTHING?

- Left it off for about half an hour.
- Rebooted
- Crashed.

# WHY NUTHIN'...I MEAN NOTHING?

- Left it off for about half an hour.
- Rebooted
- Crashed.
- Put fans on all over office. Rebooted.

# WHY NUTHIN'...I MEAN NOTHING?

- Left it off for about half an hour.
- Rebooted
- Crashed.
- Put fans on all over office. Rebooted.
- Crashed.

# WHY NUTHIN'...I MEAN NOTHING?

- Left it off for about half an hour.
- Rebooted
- Crashed.
- Put fans on all over office. Rebooted.
- Crashed.
- Prayed to machine gods. Rebooted

# WHY NUTHIN' ...I MEAN NOTHING?

- Left it off for about half an hour.
- Rebooted
- Crashed.
- Put fans on all over office. Rebooted.
- Crashed.
- Prayed to machine gods. Rebooted
- Crashed

# WHY NUTHIN'...I MEAN NOTHING?

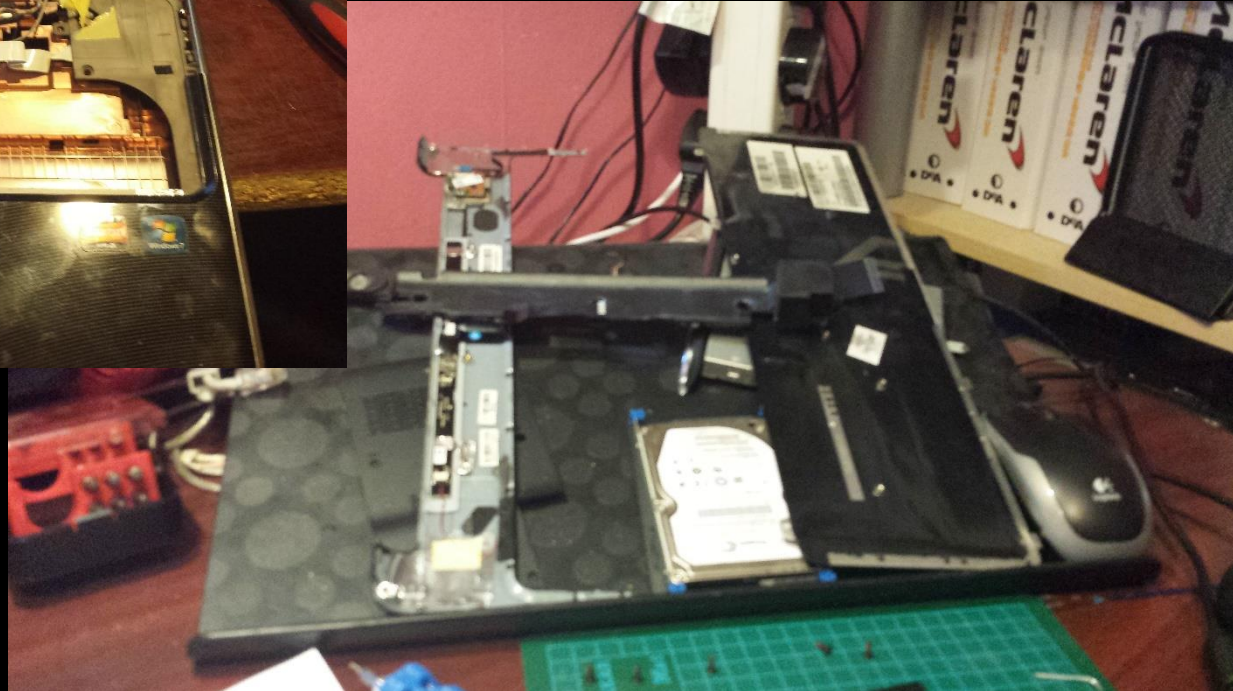
- Left it off for about half an hour.
- Rebooted
- Crashed.
- Put fans on all over office. Rebooted.
- Crashed.
- Prayed to machine gods. Rebooted
- Crashed
- Midnight. Gave up. Went to bed.

# WHY NUTHIN'...I MEAN NOTHING?

- OK, Friday sucked. Dare I ask about Saturday?



# WHY NOTHIN'...I MEAN NOTHING?



# WHY NUTHIN'...I MEAN NOTHING?

- Whoa. Did it work?

# WHY NUTHIN'...I MEAN NOTHING?

- Whoa. Did it work?
  - NO.

# WHY NUTHIN' ...I MEAN NOTHING?

- Saturday evening everything looked bleak.
- No productivity computer.
- Can I use the games computer for working?
- No: here's why:
  - It's connected to a 32" TV
  - Awesome for gaming.
  - BAD FOR TEXT
  - Text on 32" TV = headache + sore eyes
  - No other monitor to use. ☹️

# WHY NUTHIN'...I MEAN NOTHING?

- Saturday evening everything looked bleak.
- No productivity computer.

# WHY NUTHIN'...I MEAN NOTHING?

- Saturday evening everything looked bleak.
- No productivity computer.
- Can I use the games computer for working?

# WHY NUTHIN'...I MEAN NOTHING?

- Saturday evening everything looked bleak.
- No productivity computer.
- Can I use the games computer for working?
- No: here's why:
  - It's connected to a 32" TV

# WHY NUTHIN'...I MEAN NOTHING?

- Saturday evening everything looked bleak.
- No productivity computer.
- Can I use the games computer for working?
- No: here's why:
  - It's connected to a 32" TV
  - Awesome for gaming.



# WHY NUTHIN' ...I MEAN NOTHING?

- Saturday evening everything looked bleak.
- No productivity computer.
- Can I use the games computer for working?
- No: here's why:
  - It's connected to a 32" TV
  - Awesome for gaming.
  - BAD FOR TEXT

# WHY NUTHIN'...I MEAN NOTHING?

- Saturday evening everything looked bleak.
- No productivity computer.
- Can I use the games computer for working?
- No: here's why:
  - It's connected to a 32" TV
  - Awesome for gaming.
  - BAD FOR TEXT
  - Text on 32" TV = headache + sore eyes

# WHY NUTHIN' ...I MEAN NOTHING?

- Saturday evening everything looked bleak.
- No productivity computer.
- Can I use the games computer for working?
- No: here's why:
  - It's connected to a 32" TV
  - Awesome for gaming.
  - BAD FOR TEXT
  - Text on 32" TV = headache + sore eyes
  - No other monitor to use. ☹️

# WHY NUTHIN'...I MEAN NOTHING?

- But this update...how...?
- Because an angel appeared to me.

MRS. SELEZEN!



**SHE HAS POWERFUL FRIENDS!**



# MRS SELEZEN SAVES THE DAY!

- She has sacrificed her own laptop so that I can continue to work.
- Currently my laptop hard drive is in her computer. Her HDD is snuggled up in my laptop for now.

# PRODUCTIVITY!

- Saturday evening was spent finishing the reinstall of Windows 8...
- ...and all the software I need (Office, Inkscape, fonts, settings, networking etc etc...
- ...and of course 114 Windows Updates.



# SUNDAY!

- Sunday was the last “event” of my son’s birthday. We went to the National Space Centre for the 10<sup>th</sup> Return of The Garrison Star Wars show.
- Which is where the photo of Mrs Selezzen with her “friends” was taken.
- And amongst all that I managed to write this update.

# NOW...

- So almost nothing has been done on the book.
- But I am now more drained that I've ever been.
- A hectic week.
- And one where more than one poo has hit the fan.

# FEEDBACK AND QUESTIONS

- None that I'm aware of.

# NEXT UPDATE

- Monday 6<sup>th</sup> July 8pm UK time
- Update will be at the start of the regular Stream
- Submit your comments, questions and/or feedback by Monday 6pm for inclusion in the broadcast.

<http://daftworks.co.uk/eliterpg>

<http://twitter.com/hdSelezen>

dtwh [at] my website domain

<https://plus.google.com/u/0/communities/107962587879580759982>

<http://facebook.com/daftworksuk>

<http://twitch.tv/selezen>

<http://youtube.com/hughesd73>

Skype: hdSelezen